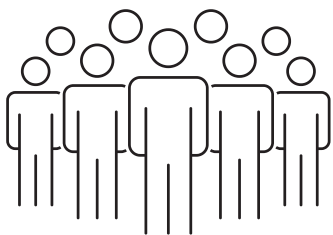


Connecting + Belonging

TASMANIAN FOREST INDUSTRY DIVERSITY ACTION PLAN

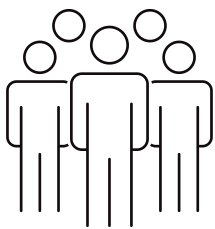
Diversity + Inclusion: It's Everyone's Responsibility

What will you do to support diversity and inclusion in your workplace?



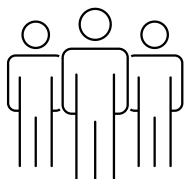
EVERYONE

Take simple steps everyday to be inclusive in your workplace - learn about diversity + inclusion, listen to new ideas from co-workers, act with tolerance and kindness, and educate others



MANAGERS

Model diversity + inclusion everyday - in recruitment, in meetings and in all interactions



EXECUTIVES

Invest in workplace diversity + inclusion

MORE INFORMATION:



www.tffpn.com.au
workforce@tffpn.com.au

