

SEIZE THE FUTURE
PAUL HIGGINS
 TASMANIAN FORESTS & FOREST PRODUCTS NETWORK

FUTURE
 YOU HAVE THE ABILITY IN NEXT 2-3 YEARS TO IMPACT 2050

BATTLE OF THERMOPYLAE
 40 : 1
 PLAN BASED ON LANDSCAPE
 LOST DUE TO PERSIANS KNOWING LANDSCAPE BETTER
 THERE'S A SECRET PATH

OODA LOOP
 OBSERVE
 ORIENT
 DECIDE
 ACT

LANDSCAPE
 PHYSICAL, SOCIAL & POLITICAL
 CLIMATE CHANGES LANDSCAPE

APPLIES TO EMERGING TECHNOLOGY, SOCIAL & POLITICAL SHIFTS
 NOVEL
 EMERGING
 CONVERGING
 ACCEPTED
 WHERE YOU ARE HELPS DEFINE EASE OF CHANGE

SHIFT AWAY FROM MAJOR POLITICAL PARTIES
 ! MINORITY GOVERNMENT = GREENER

YOUNGER GENERATIONS
 FOCUS ON SUSTAINABILITY - WHO THEY'LL WORK FOR-

PEOPLE NEED SKILLS & KNOW-HOW - COMMITMENT

REQUIRES LEADERSHIP & DOCTRINE* - ALL WORKING FOR SAME OUTCOME

THINK ABOUT *!#/?
 * DISAGREE
 - COMMIT
 DISAGREE BUT 100% COMMITMENT TO DECISIONS

COMPETITIVE LANDSCAPE
 DECARBONISING NEW DEV. MATERIALS NEW DEV. PRODUCTS
 IT WILL GET DIRTY & DIFFICULT

MONEY STARTING TO FLOW
 GREEN-SUSTAINABLE-
 IMPACTS LABOUR
 AGE EDUCATION LOCATION
 ALARMED ABOUT CLIMATE CHANGE

EMBEDDED PRINCIPLES - HOW WE WILL WORK-

EMPOWER YOUR PEOPLE
 POWER TO SPEAK UP & OUT
 ENCOURAGE DISSENT
 EMBED PSYCHOLOGICAL SAFETY

STOP WORRYING IF YOU CAN'T CONTROL IT *
 AGREE ON KEY LEVERAGE POINTS

QUESTION TIME
 TAKES TIME TO EMBED - TOP
 INDUSTRY/SECTOR LEVEL
 CAN DRIVE PATTERNED THINKING

VISION WILL BE USELESS WITHOUT ALL OF THIS

ASSIST ACTIONABLE APPRECIATE ACCEPT or DISCARD

AS AN INDUSTRY YOU SHOULD DEFINE THESE PRINCIPLES

FORESIGHT ANALYSIS
 GET A LOT OF INPUT FROM BROAD AREAS
 INSIGHTS
 HOW CAN WE JOIN OUR NEEDS?
 USE DISAGREE-COMMIT
 WE NEED TO CHANGE - EXPERIENCE CAN HELP & HINDER
 EXPERIENCED PEOPLE NEED TO BE DISRUPTABLE

PEOPLE NEED THE TOOLS TO CHANGE AS YOU REQUIRE

TOOLS FIRST TO AVOID FAILURE

© 2022 Kylie Dunn dinkylune.com

HOW DO WE PROTECT THE TREES WE HAVE?



COUNCILS NEED ENVIRONMENTAL OVERLAYS



VISION TO PLANT NOW

CONSULT MORE



RIGHT TREE RIGHT PLACE



ACTIVELY MANAGE THEM

HOW DO WE GET MORE TREES IN THE GROUND?



EXAMINE LIMITS TO INDUSTRIAL PLANTING

GOVERNMENT HAS IMPACT - THEY CAN SHIFT IT -



PUSHING THE MARKET TO CHANGE

SHOULD WE BE PUSHING GMO?

REQUIRES COMMUNITY ACCEPTANCE

ANDREW CRISP

WE KNOW WHY - BUT WHERE?

FARMS - SURETY & STABILITY -



TASMANIAN FORESTS & FOREST PRODUCTS NETWORK

ActivAcre PROGRAM

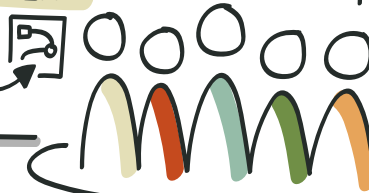
DIVERSIFY INCOME



SHELTER



LAND MANAGEMENT



WHY PLANT A TREE?

MELANIE CONOMIKES



URBAN FOREST



SOCIAL DETERMINANT OF PEOPLE'S HEALTH

6 C



TREE CANOPY IMPROVES HEALTH

STARTING TO MEASURE



CREATE GREAT NEIGHBOURHOODS



JOB CREATION COMMUNITY EQUITY



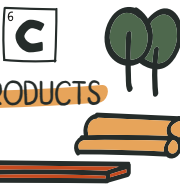
PENNY WELLS

WHY GROW A TREE?

TREES GROW RESILIENCE



INCOME



PRODUCTS

ENVIRONMENT



STABILITY & SHADE

SOCIETY



GROWTH

POLITICS

SUSTAINABLE

ECONOMY

POLICY



GLOBAL RESPONSIBILITY

ANDREW MORTON



BECAUSE OF THE FUTURE



ECONOMY



WISE & INSIGHTFUL



SHIFTING DEMOGRAPHICS



LOOKING AT FUTURE

'TRENDS'

GLOBAL SHIFT FROM EUROPE



IMPACT OF CLIMATE CHANGE

POLITICAL SHIFTS



LABOUR SHORTAGES



MINSKY MOMENT

NICK FLITTNER

~4,000 COMMUNITY PLANTED



SPIRITUAL PART OF OUR LIVES

FILTER & STABILITY



REAL ESTATE FOR WILDLIFE

FINANCIAL IMPACT - PREVENT LOSS - INCREASE PROFIT



HER MAJESTY'S JUBILEE PROJECT - 1,000 TREES



HOW CAN WE CREATE TIME & SPACE?

AGILE A LOT OF PROCESSES ARE QUICK

OPEN DOOR - NO SILLY IDEAS

CULTURE TO CREATE & FAIL

CAN FORESTRY LEARN TO REDUCE TIME OF GROWTH?



PRODUCT INNOVATION HARDEST

SOME ACTIONS KNOWN - BUT WON'T HALVE

PROF. JULIANNE O'REILLY-WAPSTRA

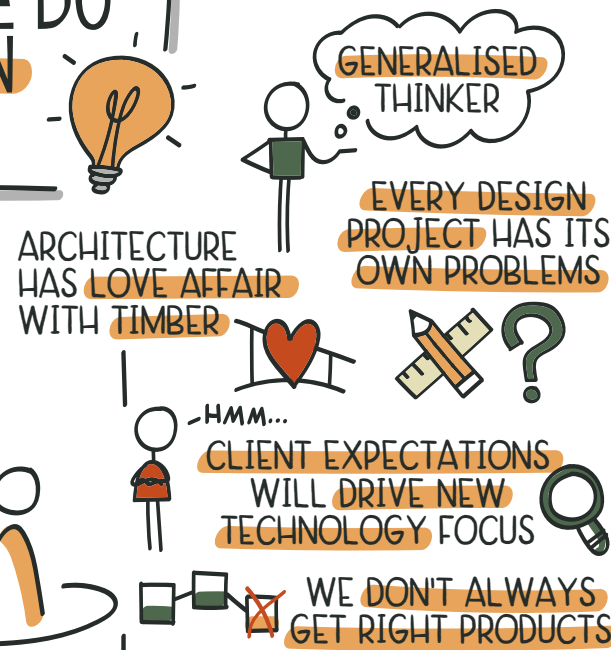


HOW DO WE DO INNOVATION BETTER?

TASMANIAN FORESTS & FOREST PRODUCTS NETWORK



PETER WALKER



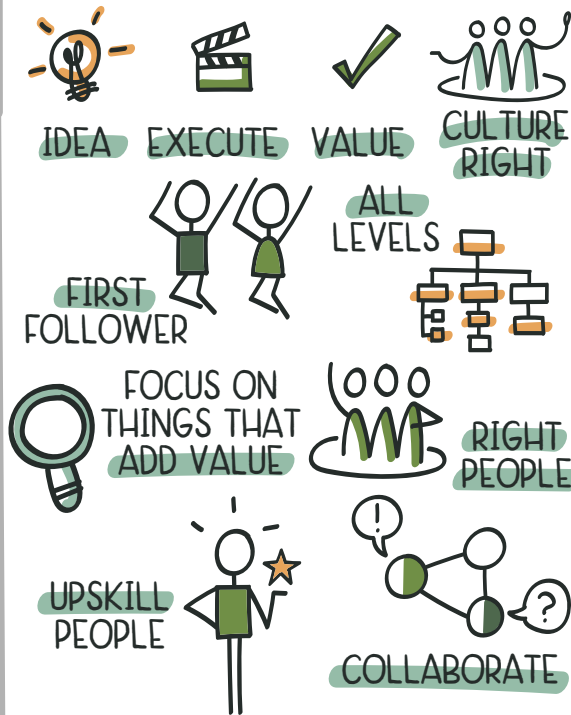
HOW DO WE IMPROVE COLLABORATION?



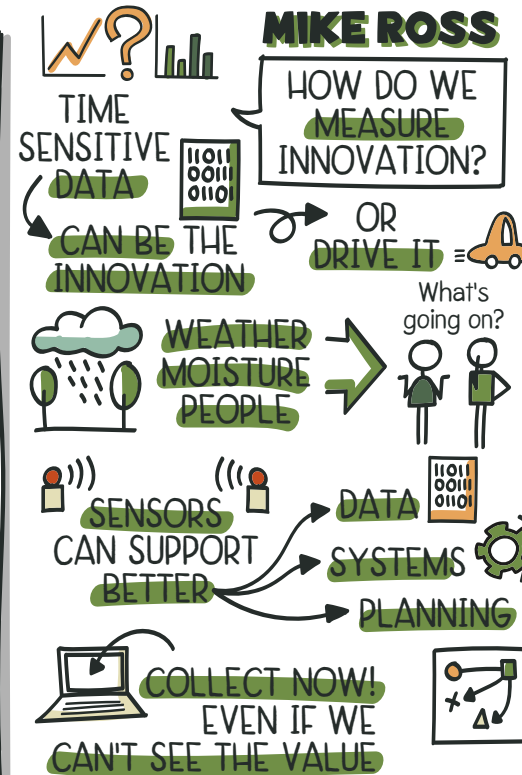
ANDREW MORGAN



DAVID BARTLETT



MIKE ROSS



HOW CAN WE SHARE INFO?



EU vs AUS PROVISION - WHEN WILL IT SHIFT?

BEEN SOME GROWTH BUT MUCH MORE NEEDED

DO WE NEED SOCIAL LICENSE?

DEFINITELY - NEED GREATER TRANSPARENCY & REPORTING

IDEALISM vs REALISM ISSUES WITH THIS

PEOPLE WANT TIMBER & DON'T WANT TO KNOW HOW IT WORKS

HOW DO WE GET STORY OUT ABOUT NATURAL CAPITAL?

REPORT HAD ASSURANCE - IS KNOWN OVERSEAS -

ROB DE FEGELY

TASMANIANS GET FORESTRY

- TREES GROW WELL HERE
- GOVERNMENT & BUSINESS SUPPORT
- WE HAVE HIGH TREE TO PEOPLE RATIO - WHY DEFICIT IN PRODUCT? -

PROFIT IS KEY DRIVER

WHY INVEST IN TASMANIA'S FOREST SECTOR?

TASMANIAN FORESTS & FOREST PRODUCTS NETWORK

DAVID ROWLINSON

PLANET ARK SUPPORTS FORESTRY & TIMBER SECTOR

CAN'T GROW CONCRETE - STEEL

2.5 MINS TO GROW ITS TIMBER ALSO STORES CARBON

BIOPHILIC DESIGN GROWTH

DOESN'T HAVE TO BE 'WOOD'

DOES TAS. INDUSTRY VALUE CURRENT MATERIALS?

LIKE IT CHEAP BUT PRICE SHOWS VALUE

MANY QUALITIES - HAD TO DEVELOP OWN METHODS

INVESTMENT IN TIME SHOULD CHARGE MORE

RALPH BELPERIO

CLIENTS HAVE MANY DRIVERS

BIOPHILIC COST

BE LIGHT ON ENVIRONMENT

MOST OF OUR TIMBER IS FROM EUROPE

TECH WILL REDUCE COST

AT SOME POINT TIMBER WILL BE CHEAPEST

RAYNE VAN DEN BERG

30 YEARS

INVESTMENT WILL FOLLOW VALUE

PAYMENTS FOR ECOSYSTEMS

BUYERS OF CARBON WANT TO UNDERSTAND SOURCE

SUSTAINABILITY PLANET, PROFIT, PEOPLE

WHAT IS OUR DIFFERENTIATOR?

SIMON ANCHER

HELP PEOPLE DEVELOP APPRECIATION FOR WHAT WE HAVE

TOURISM

FURNITURE

WHO, ME?

WHAT IS UNIQUE IN OUR TIMBER

BE SPECIFIC

COMMUNICATE THIS BETTER - PEOPLE WANT TO KNOW -

WHAT'S THE VALUE OF 'BUILDING IN USE'?

TIMBER BUILDINGS SHOULD BRING IN MORE RENT

MARKET WILL DRIVE

BIOPHILIC DESIGN IS HAVING IMPACT ON DEMAND

IS IT A NOVELTY OR WILL IT LAST?

LAUREN CARTER

INNOVATIVE CONTRACT TERMS

PEOPLE HAVE JOBS BUT WANT CAREERS

TRANSPARENT COMMS - HELP THEM HAVE PURPOSE

INTERNAL & EXTERNAL CONCERNS

CUT & HAUL IS PART OF THE INDUSTRY

HOW WE ATTRACT & RETAIN WORKFORCE



STT CASE STUDY

TOBY THORPE YOUNG PEOPLE WANT

WHO IS TAKING US THERE?

VISION MISSION (PURPOSE)

IF THERE'S A SOCIAL BENEFIT TO THE ORG. THEY WORK FOR

64% WILL WORK HARDER

LinkedIn Survey

LINDA CRAWFORD

WOMEN - NUMBERS OKAY, COULD IMPROVE

NOT ENOUGH YOUNG PEOPLE

GOV GRANT TO ATTRACT MORE WOMEN

RANGE OF ACTIVITIES UNDERTAKEN → 14.6% ↑ WOMEN IN A YEAR

PURPOSE - WE ALL WANT ONE

WHY FORESTRY?

CARE

VALUE US

HOW DO YOU ENCOURAGE PEOPLE IN FROM PLACES WITHOUT FORESTRY?

GET IN EARLY "DOLLARMITTE" FOR FORESTRY

PS

URBAN TARGETS TOO

TELL THE GREEN STORY TO KIDS

YOUNG PEOPLE WANT TO CONTRIBUTE TO SOLUTIONS

DOM MELI

HOW DO WE CREATE MORE VALUE - BE MORE RELEVANT

WHY FORESTRY?

POLICY

WORKFORCE STRATEGY & PLAN

VALUE & DIFFERENTIATOR

ADAPTABILITY IN PEOPLE NEEDED

ENVIRONMENTAL & SOCIAL IMPACT

FOR LEADERS

SOFT SKILLS TRAINING - COMMUNICATE, BE EMPATHETIC, SUPPORT!

BARB WALTERS

IMPROVE YOUR CONNECTIONS

PREVENT SUICIDE

'CUTTING THROUGH' TIMBER PROGRAM

RESILIENCE

STARTS WITH YOU LOOKING AFTER YOU!

NAVIGATE MINEFIELD OF PEOPLE

ALL HAVE A ROLE

HOW WELL DO WE ARTICULATE PURPOSE?

HARD TO TELL THE STORY - ESPECIALLY FOR SECTOR

BUT WHY?

PURPOSE KEEPS YOU GOING

WE'RE GETTING BETTER AT WHY

SIMON SINEK

HAS IMPACT OF AUTOMATION BEEN PLANNED?

THIS IS FRONT OF MIND - IT IS COMING

CHRIS CRERAR

ACKNOWLEDGE AND ACCEPT THE PAST

PROMOTING UNDERSTANDING & UNITY

RECONCILIATION ACTION PLAN - FOUNDATIONS & FRAMEWORK - SMALL ACTIONS ARE EASY TO DO

CREATE CULTURALLY SAFE WORKPLACES

CONSIDER OPTIONS TO EMPLOY & COLLABORATE

KNOW STATEMENT OF THE HEART

VOTE BY ON

ARE ORGS IMPROVING MENTAL HEALTH RESPONSES?

INVESTMENT IS IMPROVING

CLAIMS

LEADERS ARE WORRIED THEY'LL GET IT WRONG

LIKE DIVERSITY - ORGS HAVE A ROLE IN PROMOTING RECONCILIATION